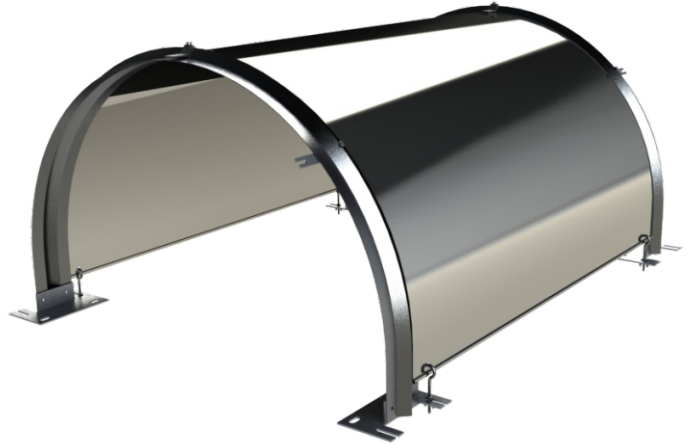


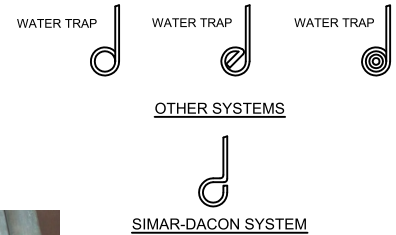
## SIMAR-DACON™ HOODS STANDARD AND CUSTOMIZED FOR BELT CONVEYORS



### UNIQUE DESIGN SHEDS WATER

Our unique design is engineered to shed water giving you years of rust free service. Simar-Dacon hoods can be fabricated from various material and gauges:

- galvanized steel G-90 (22 ga; 20 ga; 18 ga)
- aluminum, 3003 utility or 5052-H32 marine duty (16 ga.)
- stainless steel SS304 or SS316 (20 ga; 22 ga)



### 3 STYLES AVAILABLE

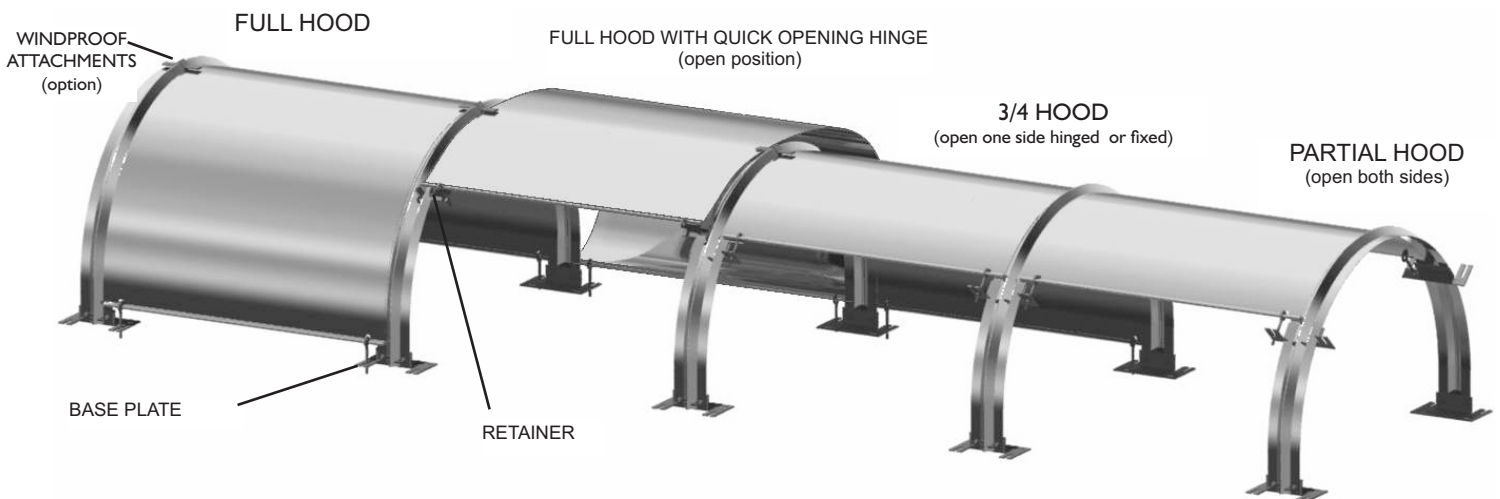
**FULL HOOD** : 180 degrees, provides the maximum safety from moving parts, extending the wear life of your covered components such as idlers & belt by protecting them from the rain, the snow & sun. This hood type is both efficient and environmentally friendly, suppressing dust and reducing material lost due to high winds .

**3/4 HOOD** : same as the full hood, but with one side permanently opened at a 45 degrees angle

**PARTIAL HOOD** : same as the 3/4 hood, but with both sides permanently opened at a 45 degrees angle

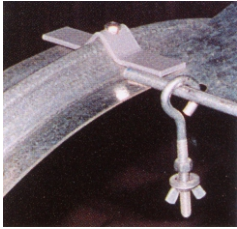
### EASY ACCESS TO CONVEYOR

Allows easy belt & idler maintenance; simply loosen the wing nuts on the opening side eyebolts , raise the hood and lock into the retaining bracket for servicing

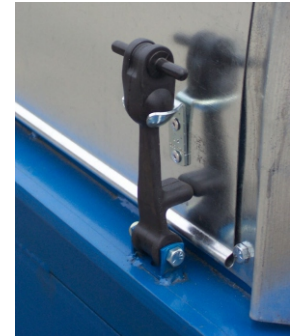


## OPTIONS:

### WINDPROOF ATTACHMENTS



Eliminate the need for awkward bulky chains. While almost invisible, this "V" shape device sits on the middle of the support band and prevents the hood sheet from blowing over while opening during windy condition.



### RUBBER LATCHES OPENING SYSTEM

Featured a quickest method of access to the conveyor belt & idlers. Also used in dirty environments where eyebolt threads tends to clog.

### CORRUGATED SIDE PANELS AND OPENINGS

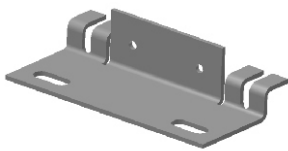
Openings can be cut as per your specifications.



Side panels can be installed on either side of the conveyor structure to shield the return belt from high winds. Panels are made from 20 ga. G-90 galvanized steel and overlap forming a tight seal

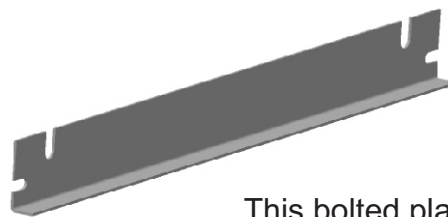


### SPECIAL BASE PLATE



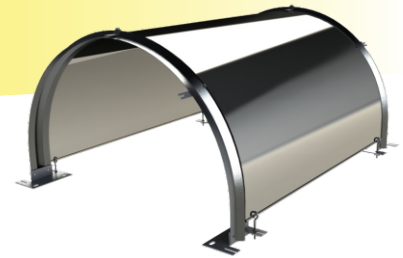
We can customised base plate such as this model used in limited space

### CLOSING PLATE

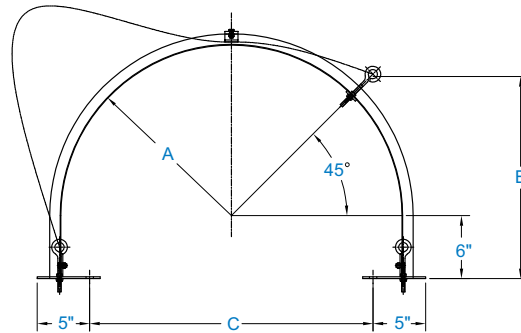
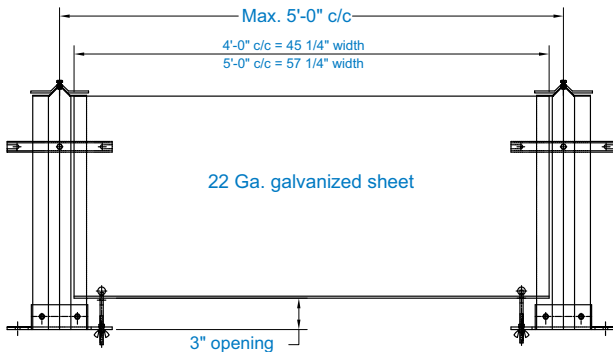


This bolted plate is used to close the 3" openings between the frame and the hood on both side

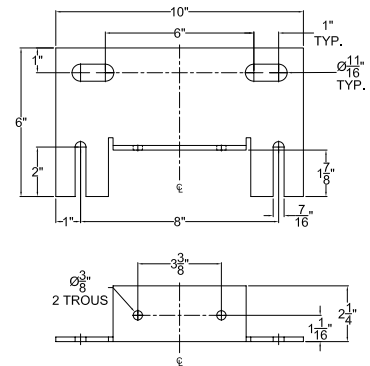




## WEIGHT AND DIMENSIONS



Belt width	A	B	C	Weight (Lbs) per section			
				Galvanized hood 22 ga Support 14 ga G-90		Aluminum hood 16 ga Support 8 ga	
				4ft \ 5ft (full)	4ft \ 5ft (3/4)	4ft \ 5ft (full)	4ft \ 5ft (3/4)
18"	16 1/4"	19 1/4"	27"	44 \ 51	42 \ 48	23 \ 27	20 \ 23
24"	19 1/4"	21 7/8"	33"	49 \ 57	47 \ 54	26 \ 30	22 \ 26
30"	22 1/4"	24"	39"	55 \ 64	52 \ 60	29 \ 34	25 \ 28
36"	25 1/4"	26 1/8"	45"	60 \ 70	57 \ 66	32 \ 37	27 \ 31
42"	28 1/4"	28 1/4"	51"	66 \ 77	62 \ 72	35 \ 41	30 \ 34
48"	31 1/4"	30 3/8"	57"	71 \ 83	67 \ 77	38 \ 44	32 \ 37
54"	34 1/4"	32 1/2"	63"	77 \ 90	72 \ 83	41 \ 48	34 \ 39
60"	37 1/4"	34 5/8"	69"	82 \ 97	77 \ 89	43 \ 51	37 \ 42
66"	40 1/4"	36 3/4"	75"	90 \ 104	82 \ 96	46 \ 55	39 \ 44
72"	43 1/4"	38 7/8"	81"	93 \ 111	86 \ 101	49 \ 58	41 \ 48
84"	49 1/4"	43"	93"	99 \ 123	92 \ 113	55 \ 64	45 \ 54



## STANDARD BASE PLATE

## EXAMPLE OF PART # TO ORDER A STANDARD HOOD (DG36-CI-224a)

- D SIMAR-DACON
- G G = galvanized, A = Aluminum, S = Stainless steel (304 ou 316)
- 36 Belt width in inches
- C C = Complete (full) 180 degrés, P = partial, 3Q = 3/4 type
- 1 1 = Opening one side only, 2 = opening from both sides, F = fixed
- 22 Thickness of sheet material (gauge)
- 4 Hood centers (in feet)
- a With optional windproof attachments

## INSTALLATION

- 1- Drill holes in conveyor using the base plate for a template
- 2- Mount base plates to support band
- 3- Mount retainer to support band
- 4- Bolt support band on conveyor with retainer on side where service will be made
- 5- Mount hoods to support bands by bolting eyebolts to base plates.