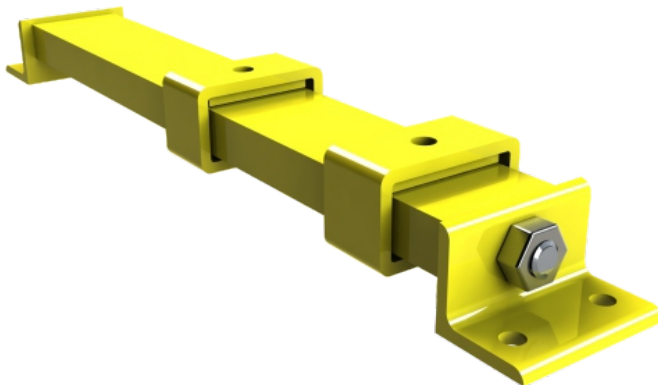


SIMAR-DACON™ ALL STEEL CONVEYOR TAKE-UPS SCREW OR TELESCOPIC TAKE-UP

MEDIUM DUTY · HEAVY DUTY · EXTRA HEAVY DUTY

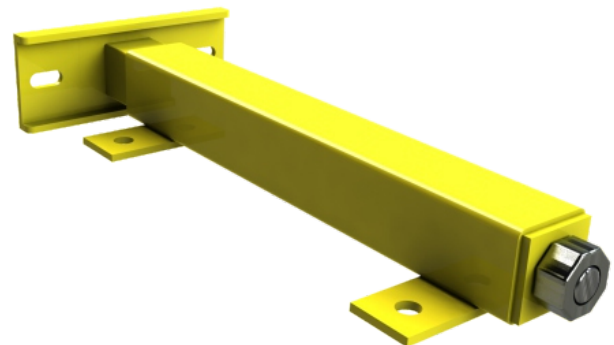
DACON™ all steel take-ups for conveyor belt are built robustly and optimized in order to ensure a long-lasting maintenance-free performance and to bear to the natural elongation of the belt. The take-up ACME thread screw is entirely protected and remains under tension regardless of the direction of the load. Simar-Dacon produces two different models of take-up : the screw take-up (below, to the left) and the telescopic take-up (below, to the right). In both cases, the standard product can be modified, adjusted, adapted and customized to your specific needs. Take-ups can also be hot dip galvanized or painted.

SCREW TAKE-UP



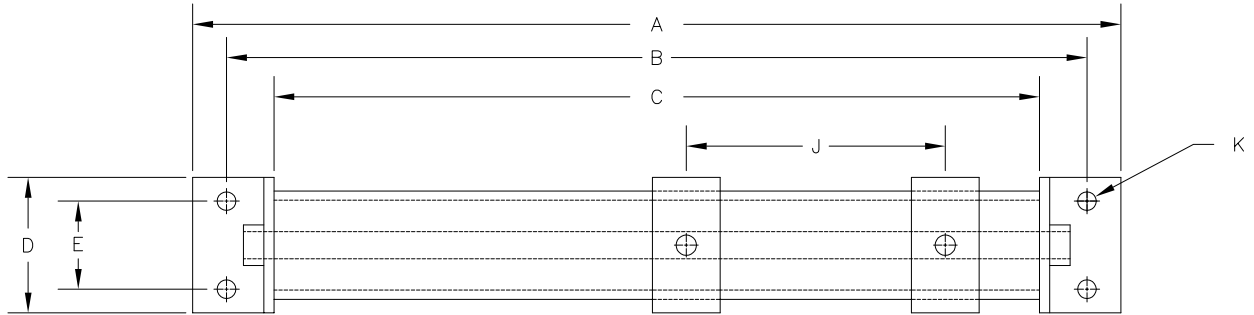
The screw take-up is the most frequently used. It offers a great robustness and its structure is made to support heavy loads. Its steel saddles are made from rectangular tubing and are designed to be adjustable for all sizes of pillow blocks; 2 or 4 bolt hole models available. The assembly of this type of take-up is made flat.

TELESCOPIC TAKE-UP

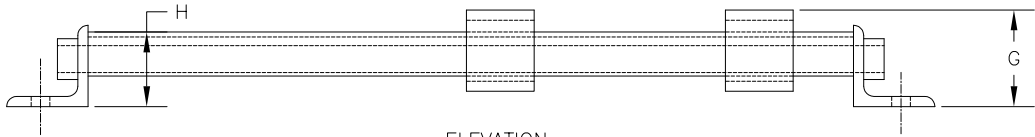
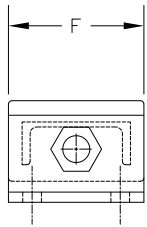


The telescopic take-up is frequently used on small size and lightweight conveyors and offers the advantage of being able to be installed in narrow spaces. Thereby, it doesn't require an underlying steel structure to support it, since it is fixed laterally, directly on the conveyor. Its support plate is built and adapted according to each size of rolling.

SPECIFICATIONS - SCREW TAKE-UP



PLAN



ELEVATION

EXTRA HEAVY DUTY

TYPE	STROKE	A	B	C	D	E	F	G	H	J	K
DST	12" EHD	40"	37-1/2"	34"	6-1/2"	4"	7-3/8"	4-13/16"	6C 15,1	4"	13/16" Ø
DST	18" EHD	46"	43-1/2"	40"	6-1/2"	4"	7-3/8"	4-13/16"	6C 15,1	4"	13/16" Ø
DST	24" EHD	52"	49-1/2"	46"	6-1/2"	4"	7-3/8"	4-13/16"	6C 15,1	4"	13/16" Ø
DST	30" EHD	60"	57-1/2"	54"	6-1/2"	4"	7-3/8"	4-13/16"	6C 15,1	4"	13/16" Ø
DST	36" EHD	66"	63-1/2"	60"	6-1/2"	4"	7-3/8"	4-13/16"	6C 15,1	4"	13/16" Ø
DST	48" EHD	78"	75-1/2"	72"	6-1/2"	4"	7-3/8"	4-13/16"	6C 15,1	4"	13/16" Ø

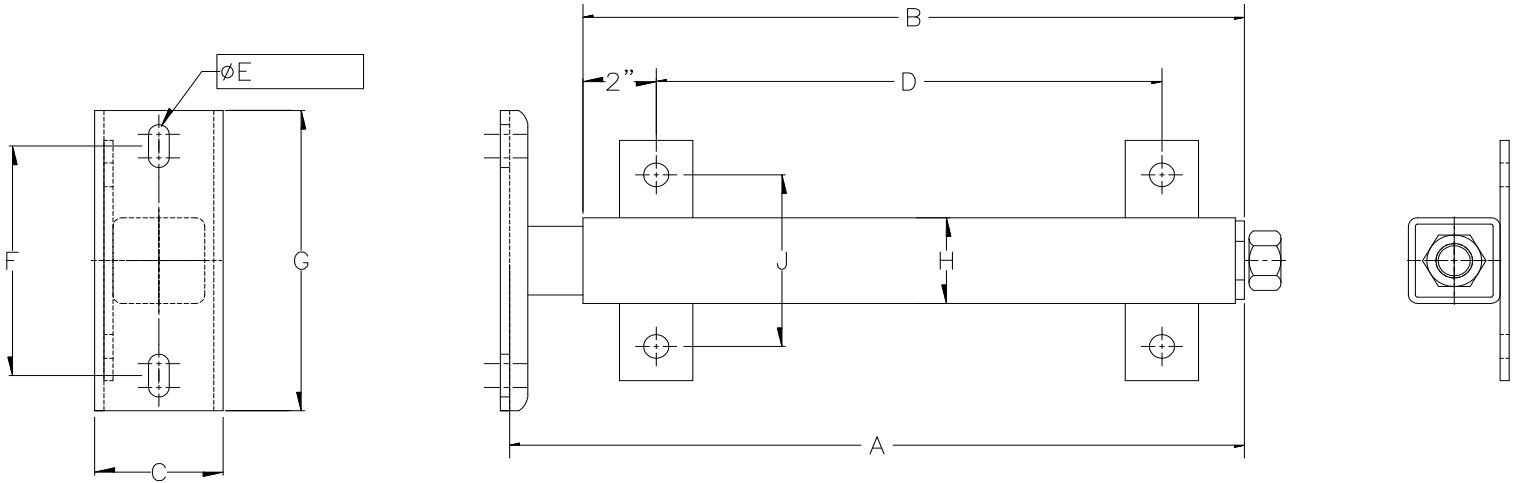
HEAVY DUTY

TYPE	STROKE	A	B	C	D	E	F	G	H	J	K
DST	12" HD	40"	37-1/2"	34"	6-1/2"	4"	7"	3-1/2"	6C 8,2	2-1/2"	13/16" Ø
DST	18" HD	46"	43-1/2"	40"	6-1/2"	4"	7"	3-1/2"	6C 8,2	2-1/2"	13/16" Ø
DST	24" HD	52"	49-1/2"	46"	6-1/2"	4"	7"	3-1/2"	6C 8,2	2-1/2"	13/16" Ø
DST	30" HD	60"	57-1/2"	54"	6-1/2"	4"	7"	3-1/2"	6C 8,2	2-1/2"	13/16" Ø
DST	36" HD	66"	63-1/2"	60"	6-1/2"	4"	7"	3-1/2"	6C 8,2	2-1/2"	13/16" Ø
DST	48" HD	78"	75-1/2"	72"	6-1/2"	4"	7"	3-1/2"	6C 8,2	2-1/2"	13/16" Ø

MEDIUM DUTY

TYPE	STROKE	A	B	C	D	E	F	G	H	J	K
DST	12" MD	34-1/4"	31-3/4"	28-1/4"	5"	3-1/4"	5"	3-1/2"	4C 5,4	2-1/2"	11/16" Ø
DST	18" MD	40-1/4"	37-3/4"	34-1/4"	5"	3-1/4"	5"	3-1/2"	4C 5,4	2-1/2"	11/16" Ø
DST	24" MD	46-1/4"	43-3/4"	40-1/4"	5"	3-1/4"	5"	3-1/2"	4C 5,4	2-1/2"	11/16" Ø
DST	30" MD	52-1/4"	49-3/4"	46-1/4"	5"	3-1/4"	5"	3-1/2"	4C 5,4	2-1/2"	11/16" Ø
DST	36" MD	58-1/4"	55-3/4"	52-1/4"	5"	3-1/4"	5"	3-1/2"	4C 5,4	2-1/2"	11/16" Ø
DST	48" MD	70-1/4"	67-3/4"	64-1/4"	5"	3-1/4"	5"	3-1/2"	4C 5,4	2-1/2"	11/16" Ø

SPECIFICATIONS - TELESCOPIC TAKE-UP



EXTRA HEAVY DUTY							
TYPE	STROKE	A	B	C	D	H	J
DSTT	6" EHD	12-3/8"	10-1/4"	4"	6-1/4"	3-1/2"	5-1/2"
DSTT	8" EHD	14-3/8"	12-1/4"	4"	8-1/4"	3-1/2"	5-1/2"
DSTT	10" EHD	16-3/8"	14-1/4"	4"	10-1/4"	3-1/2"	5-1/2"
DSTT	12" EHD	18-3/8"	16-1/4"	4"	12-1/4"	3-1/2"	5-1/2"
DSTT	18" EHD	24-3/8"	22-1/4"	4"	18-1/4"	3-1/2"	5-1/2"
DSTT	24" EHD	30-3/8"	28-1/4"	4"	24-1/4"	3-1/2"	5-1/2"

HEAVY DUTY							
TYPE	STROKE	A	B	C	D	H	J
DSTT	6" HD	12-3/8"	10-1/4"	4"	6-1/4"	3"	5"
DSTT	8" HD	14-3/8"	12-1/4"	4"	8-1/4"	3"	5"
DSTT	10" HD	16-3/8"	14-1/4"	4"	10-1/4"	3"	5"
DSTT	12" HD	18-3/8"	16-1/4"	4"	12-1/4"	3"	5"
DSTT	18" HD	24-3/8"	22-1/4"	4"	18-1/4"	3"	5"
DSTT	24" HD	30-3/8"	28-1/4"	4"	24-1/4"	3"	5"

MEDIUM DUTY							
TYPE	STROKE	A	B	C	D	H	J
DSTT	6" MD	12-3/8"	10-1/4"	3-1/2"	6-1/4"	2-1/2"	5"
DSTT	8" MD	14-3/8"	12-1/4"	3-1/2"	8-1/4"	2-1/2"	5"
DSTT	10" MD	16-3/8"	14-1/4"	3-1/2"	10-1/4"	2-1/2"	5"
DSTT	12" MD	18-3/8"	16-1/4"	3-1/2"	12-1/4"	2-1/2"	5"
DSTT	18" MD	24-3/8"	22-1/4"	3-1/2"	18-1/4"	2-1/2"	5"
DSTT	24" MD	30-3/8"	28-1/4"	3-1/2"	24-1/4"	2-1/2"	5"