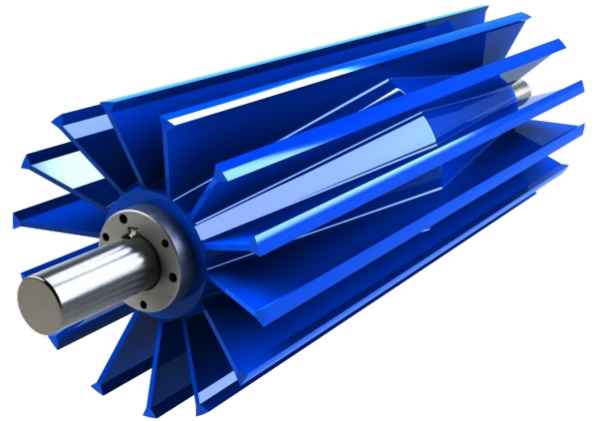


SIMAR-DACON™ SELF-CLEANING WING PULLEYS FOR MEDIUM OR HEAVY DUTY

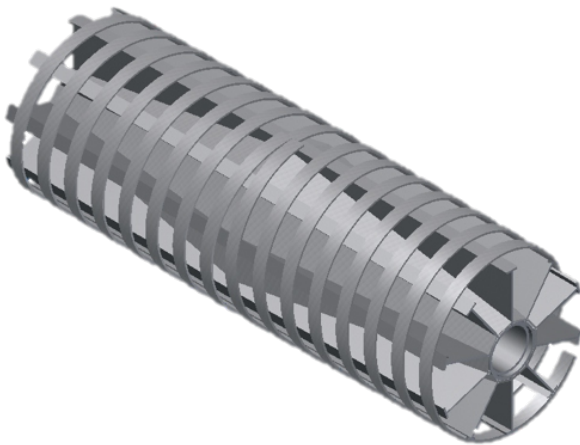
SELF-CLEANING REGULAR WING PULLEY

Pulley and belt life is extended by the self-cleaning action employed by this pulley. Individual all-steel wings and gussets expel excessive build up of material from the area of belt contact which enhances traction and reduces abrasion of both belt and pulley. Where abrasion and excessive build up conditions exist, this type of pulley provides an excellent alternative to conventional drum style pulleys. Pulleys dimensions can be adjusted to your needs.

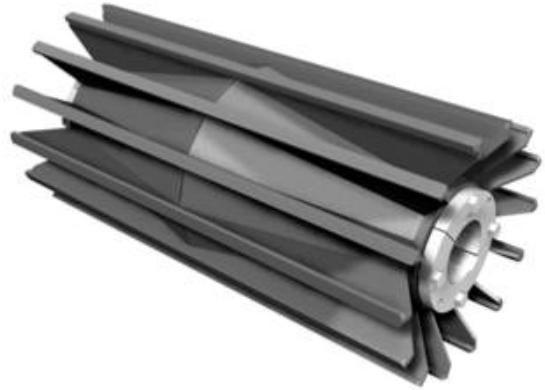
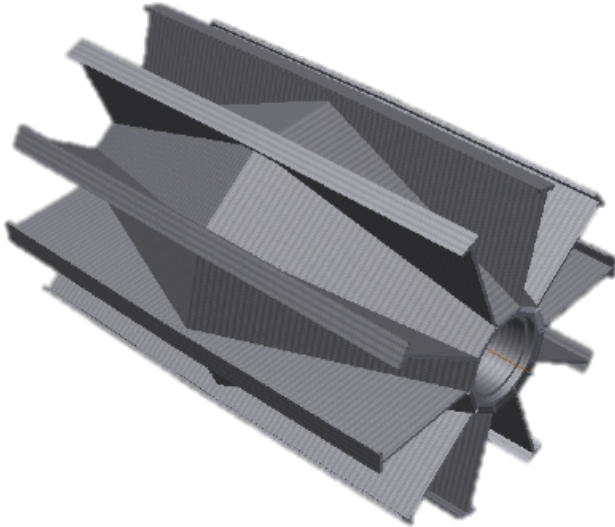


SELF-CLEANING SPIRAL WING PULLEY

The self-cleaning spiral wing pulley is formed by a flat bar helically wound towards one another, welded to all steel wings, with intervals between them to allow excess material to discharge to the side of the conveyor. Although similar to the self-cleaning regular wing pulley, this pulley's design permits continuous pulley contact with the belt during rotation which eliminates excessive noises and vibration without sacrificing self-cleaning action. In addition, this design increase the contact surface between the pulley and the belt, which enhances traction between them. Pulleys dimensions can be adjusted to your needs.



TECHNICAL SPECIFICATIONS



DIA	QD HUB	MAX BORE	Weights																				
			Face Width																				
			12	14	16	18	20	22	24	26	30	32	36	38	40	44	46	51	54	57	60	63	66
8"	SF	2 - 1/2	34	38	42	46	49	54	58	60	70	75											
10"	SF	2 - 1/2	42	43	52	60	62	67	70	74	85	92	104	110									
	E	2 - 15/16	48	49	54	63	67	69	73	78	88	96	108	116									
12"	SF	2 - 1/2	54	62	68	75	82	88	95	101	115	122	132	144	150	165							
	E	2 - 15/16	60	65	74	82	90	100	106	114	130	138	154	162	170	185							
	F	3 - 7/16	65	70	79	86	98	106	113	119	136	150	160	173	180	189							
14"	SF	2 - 1/2	65	72	84	95	101	110	121	128	144	155	175	182	190	210	218	241					
	E	2 - 15/16	70	80	90	100	112	118	131	136	157	168	185	192	210	220	230	250					
	F	3 - 7/16	78	90	100	109	115	125	136	144	163	176	197	206	218	240	243	275					
	JS	3 - 15/16	83	101	110	116	126	137	145	164	177	198	207	219	236	244	276	283					
16"	SF	2 - 1/2	75	80	102	112	120	125	136	144	168	178	200	207	220	241	260	276					
	E	2 - 15/16	80	88	104	114	125	130	142	157	175	184	204	220	226	250	270	290					
	SF	3 - 7/16	85	92	105	120	129	140	148	161	180	192	214	228	239	252	273	299					
	JS	3 - 15/16	102	112	122	134	147	161	171	182	208	212	237	246	259	285	294	322					
18"	SF	2 - 1/2	96	110	121	135	146	160	175	187	213	225	251	266	280	306	320	350					
	E	2 - 15/16	98	112	124	136	150	164	179	188	218	232	257	273	285	314	328	364					
	F	3 - 7/16	102	120	130	144	158	174	186	198	230	235	270	281	296	325	338	375					
	JS	3 - 15/16	119	135	147	157	173	186	200	211	240	251	280	293	307	334	350	385					
	MS	4 - 1/2	136	143	160	173	186	200	215	231	256	272	298	313	328	356	368	407					
20"	SF	2 - 1/2	110	120	133	150	162	175	190	204	235	250	280	291	309	335	352	400	402	427	453	475	497
	E	2 - 15/16	112	122	138	151	163	181	192	208	242	256	290	298	314	346	367	410	418	446	471	494	514
	F	3 - 7/16	114	132	150	157	173	190	205	215	249	263	295	310	325	350	370	412	426	449	476	501	519
	JS	3 - 15/16	127	150	161	175	190	205	219	230	265	280	307	326	335	370	391	424	440	462	487	512	533
	MS	4 - 1/2	148	163	175	192	209	223	239	250	286	304	329	342	357	387	402	443	463	480	510	536	554
24"	SF	2 - 1/2	175	205	237	261	285	310	335	362	410	439	490	530	557	615	641	705	739	786			
	E	2 - 15/16	181	207	239	262	289	312	348	371	419	440	492	540	566	617	643	709	745				
	F	3 - 7/16	189	222	251	280	304	328	355	380	435	459	509	545	568	619	648	711	752				
	JS	3 - 15/16	200	226	254	285	309	332	360	382	437	463	514	554	571	620	658	718					
	MS	4 - 1/2	212	240	260	291	315	342	368	396	440	469	520	562	581	630	662						
	NS	5		269	296	321	346	372	399	447	480	528	580	589	637								